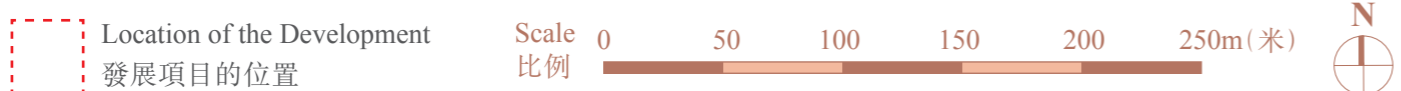
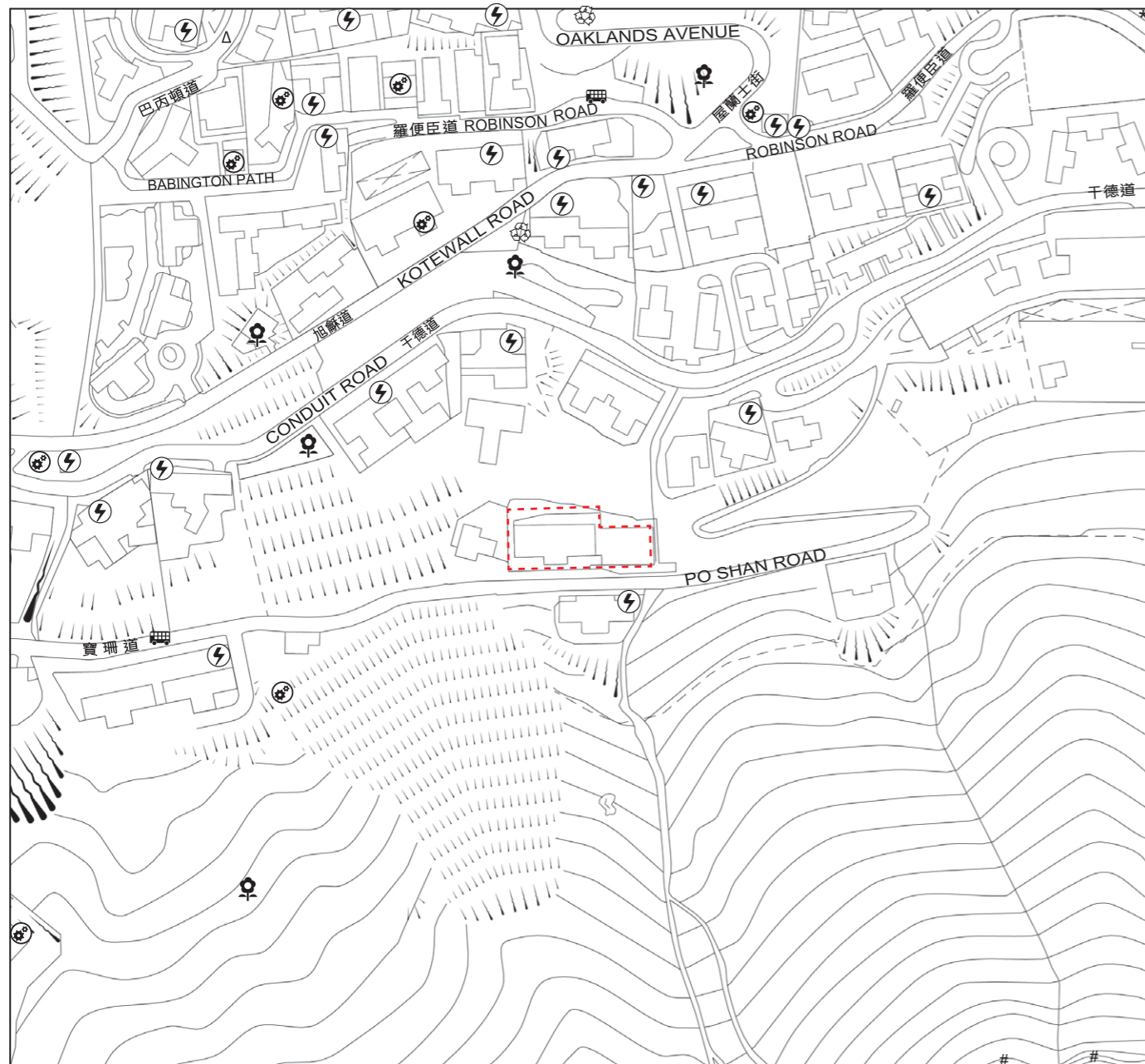
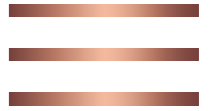


7 LOCATION PLAN OF THE DEVELOPMENT 發展項目的所在位置圖



Street name(s) not shown in full in the Location Plan of the Development:

於發展項目的所在位置圖未能顯示之街道全名：

- * Park Road 柏道
- # Lugard Road 盧吉道
- Δ Lyttelton Road 列堤頓道

The map is provided by the Hong Kong Common Spatial Data Infrastructure (CSDI) Portal and intellectual property rights are owned by the Government of the HKSAR.

地圖由空間數據共享平台提供，香港特別行政區政府為知識產權擁有人。

This location plan is prepared by the Vendor with reference to the Digital Topographic Map No. T11-SW-A dated 9 April 2026 from Survey and Mapping Office of the Lands Department, with adjustments where necessary.

此位置圖是由賣方擬備並參考地政總署測繪處於2026年4月9日出版之數碼地形圖，圖幅編號T11-SW-A，有需要處經修正處理。

Notation 圖例

-  Public Utility Installation
公用事業設施裝置
-  Power Plant (including Electricity Sub-stations)
發電廠 (包括電力分站)
-  Public Park
公園
-  Public Transport Terminal (including Rail Station)
公共交通總站 (包括鐵路車站)
-  Refuse Collection Point
垃圾收集站

Notes:

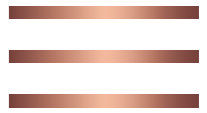
1. The plan may show more than the area required under the Residential Properties (First-hand Sales) Ordinance due to technical reasons that the boundary of the Development is irregular.
2. The Vendor advises prospective purchasers to conduct an on-site visit for a better understanding of the Development site, its surrounding environment and the public facilities nearby.

備註：

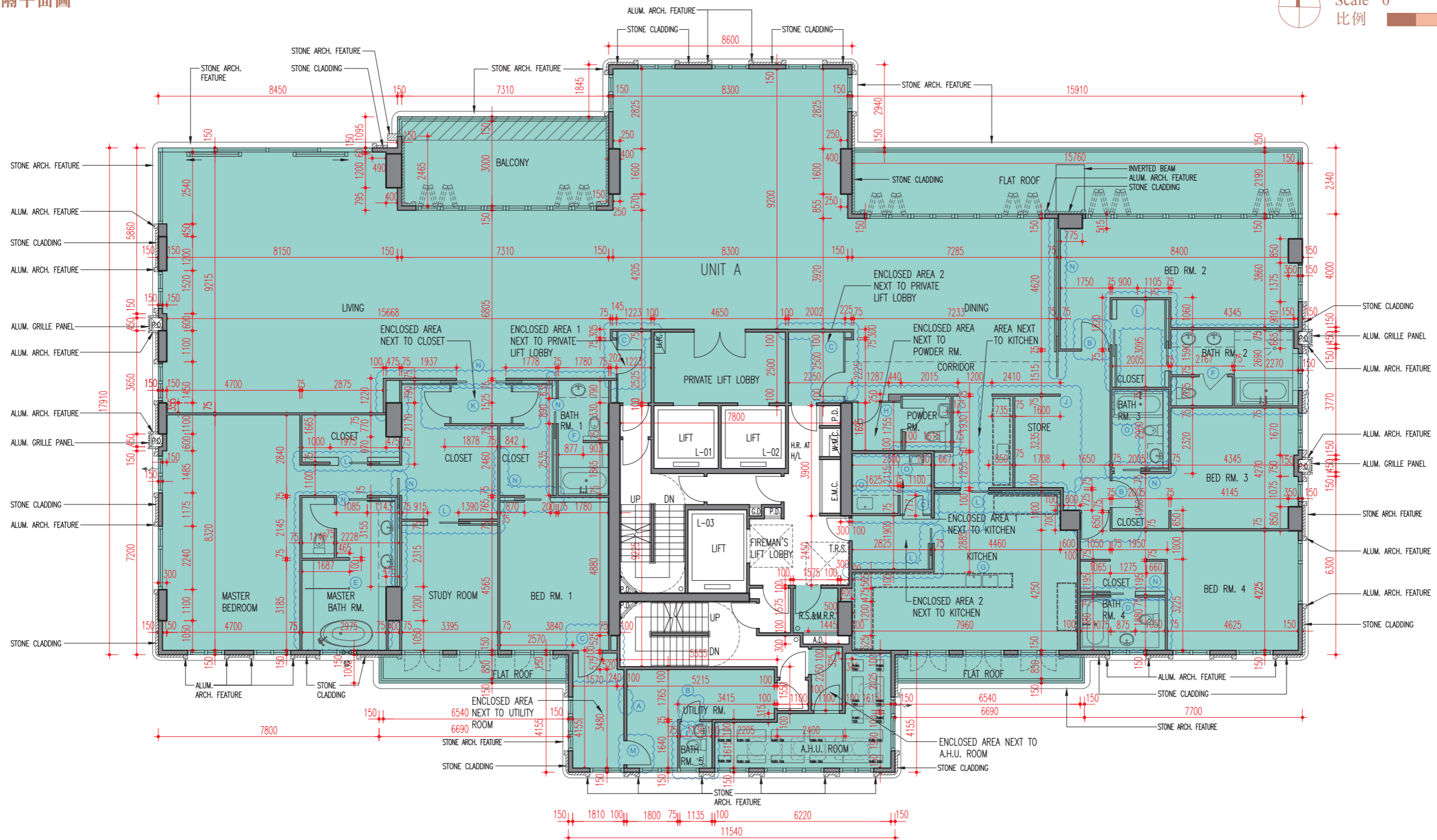
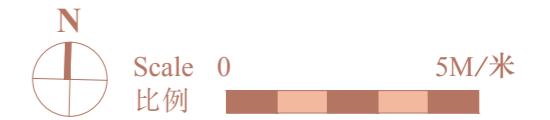
1. 由於發展項目的邊界不規則的技術原因，此圖所顯示的範圍可能超過《一手住宅物業銷售條例》所規定的範圍。
2. 賣方建議準買家到有關發展項目地盤作實地考察，以對該發展地盤、其周邊地區環境及附近的公共設施有較佳了解。

11 FLOOR PLANS OF RESIDENTIAL PROPERTIES IN THE DEVELOPMENT

發展項目的住宅物業的樓面平面圖



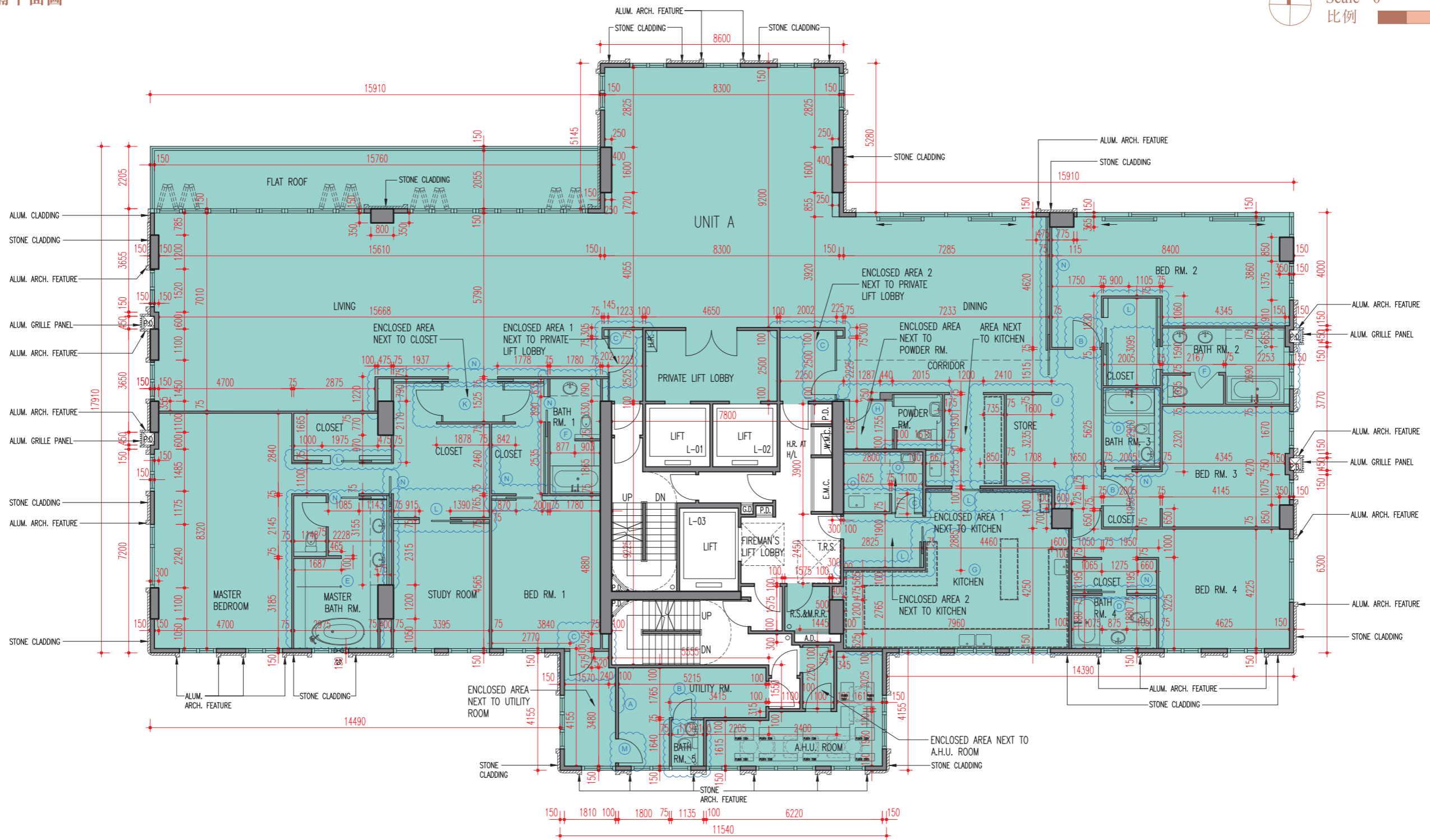
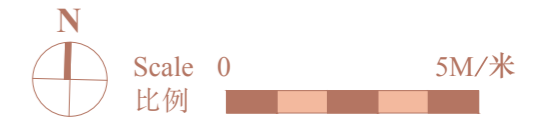
Latest Layout Plan of 8/F
8樓現狀間隔平面圖



11 FLOOR PLANS OF RESIDENTIAL PROPERTIES IN THE DEVELOPMENT

發展項目的住宅物業的樓面平面圖

Latest Layout Plan of 9/F
9樓現狀間隔平面圖



23 FITTINGS, FINISHES AND APPLIANCES

裝置、裝修物料及設備



Schedule of mechanical and electrical provisions of residential units

住宅單位機電裝置數量說明表

Location 位置	Description 描述	G/F 地下	1/F-3/F & 6/F 1樓至3樓及6樓		3/F 3樓	5/F 5樓		7/F 7樓		8/F 8樓	9/F 9樓	10/F 10樓	
		A	A	B	B	A	B	A	B	A	A	A	
Living Room & Dining Room 客廳及飯廳	13A Single Socket Outlet with USB 13單位電插座連USB插座	2	-	-	-	-	-	-	-	-	-	-	
	13A Twin Socket Outlet with USB 13A雙位電插座連USB插座	-	2	2	2	2	2	2	7	-	-	-	
	13A Single Socket Outlet 13A單位電插座	6	3	1	1	-	1	3	5	-	-	-	
	13A Twin Socket Outlet 13A雙位電插座	8	12	9	9	10	8	12	7	12	12	15	
	Air Conditioner Indoor Unit Fused Connection Unit 室內空調機熔斷器接線電掣	5	7	6	6	7	6	7	6	10	10	11	
	Electrical Curtain Fused Connection Unit 電動窗簾掣熔斷器接線電掣	-	-	-	-	-	-	-	-	-	-	-	11
	Electrical Curtain Control Adaptable Box 電動窗簾掣接線掣	2	8	12	12	10	12	8	7	12	13	11	
	Fan Switch 風扇掣	-	1	1	1	1	1	1	-	-	-	-	
	Fire Hose Reel 消防喉轆	-	-	-	-	-	-	-	-	-	-	-	1
	Lighting Switch 燈掣	7	2	2	3	2	2	2	8	6	6	2	
	Lighting Point 燈位	37	36	37	39	31	36	36	55	72	68	61	
	Switch for Electric Curtain 電動窗簾掣	1	2	2	2	2	2	2	3	6	5	1	
	TV Aerial Outlet 電視天線插座	1	4	3	3	4	3	4	2	2	2	-	
	Telephone Outlet 電話天線插座	2	4	3	3	4	3	4	2	2	2	2	
	Video Door Phone 視像對講機	1	1	1	1	1	1	1	1	-	-	-	
	Indoor Air Quality Sensor 室內空氣質素感應器	1	2	2	2	2	2	2	2	1	1	1	
	Fused Connection Unit for Lighting 燈熔斷器接線電掣	-	2	4	4	2	2	2	-	-	-	-	
	Closet Lighting Fused Connection Unit 衣櫃燈熔斷器接線電掣	-	-	-	-	-	-	-	4	-	-	-	
	Data Socket Outlet 數據插座	2	-	-	-	-	-	-	2	2	2	2	
	NOW TV Socket Outlet NOW電視天線插座	1	-	-	-	-	-	-	1	-	-	-	
AV Outlet 影音系統插座	3	-	-	-	-	-	-	3	-	-	-		
Switch for Fireplace 火爐開關掣	1	-	-	-	-	-	-	-	-	-	-		

Remarks:

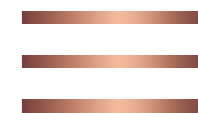
- The numbers as shown in the above table denote the numbers provided.
- The symbol "-" as shown in the above table denotes "Not Provided".

備註:

- 上表顯示的數目代表提供的數量。
- 上表 "-" 代表「不提供」。

23 FITTINGS, FINISHES AND APPLIANCES

裝置、裝修物料及設備



Schedule of mechanical and electrical provisions of residential units

住宅單位機電裝置數量說明表

Location 位置	Description 描述	G/F 地下	1/F-3/F & 6/F 1樓至3樓及6樓		3/F 3樓	5/F 5樓		7/F 7樓		8/F 8樓	9/F 9樓	10/F 10樓
		A	A	B	B	A	B	A	B	A	A	A
Master Bedroom & Closet 主人睡房及衣帽間	13A Single Socket Outlet 13A單位電插座	-	5	8	8	-	3	5	-	-	-	-
	13A Twin Socket Outlet 13A雙位電插座	-	4	7	7	-	5	4	-	-	-	-
	13A Twin Socket Outlet With USB 13A雙位電插座連USB插座	-	1	1	1	-	1	1	-	-	-	-
	Air Conditioner Indoor Unit Fused Connection Unit 室內空調機熔斷器接線電掣	-	4	4	4	-	3	4	-	-	-	-
	Closet Lighting Fused Connection Unit 衣櫃燈熔斷器接線電掣	-	4	6	6	-	3	4	-	-	-	-
	Electrical Curtain Control Adaptable Box 電動窗簾掣接線掣	-	4	6	6	-	6	4	-	-	-	-
	Lighting Switch 燈掣	-	3	3	4	-	3	3	-	-	-	-
	Lighting Point 燈位	-	15	13	13	-	10	15	-	-	-	-
	Switch for Electric Curtain 電動窗簾掣	-	2	2	2	-	2	2	-	-	-	-
	Switch for Exhaust Fan 抽氣扇開關掣	-	1	1	1	-	1	1	-	-	-	-
	TV Aerial Outlet 電視天線插座	-	2	2	2	-	2	2	-	-	-	-
	Telephone Outlet 電話天線插座	-	2	2	2	-	2	2	-	-	-	-
	Fused Connection Unit for Lighting 燈熔斷器接線電掣	-	1	1	1	-	1	-	-	-	-	-
Data Socket Outlet 數據插座	-	-	-	-	-	-	1	-	-	-	-	
Enclosed Area next to Master Bedroom 主人睡房旁封閉區域	13A Single Socket Outlet 13A單位電插座	-	-	-	-	1	-	-	-	-	-	-
	13A Twin Socket Outlet 13A雙位電插座	-	-	-	-	5	-	-	-	-	-	-
	13A Twin Socket Outlet with USB 13A雙位電插座連USB插座	-	-	-	-	1	-	-	-	-	-	-
	Air Conditioner Indoor Unit Fused Connection Unit 室內空調機熔斷器接線電掣	-	-	-	-	1	-	-	-	-	-	-
	Electrical Curtain Control Adaptable Box 電動窗簾掣接線掣	-	-	-	-	2	-	-	-	-	-	-
	Lighting Switch 燈掣	-	-	-	-	1	-	-	-	-	-	-
	Lighting Point 燈位	-	-	-	-	9	-	-	-	-	-	-
	Switch for Electric Curtain 電動窗簾掣	-	-	-	-	1	-	-	-	-	-	-
	TV Aerial Outlet 電視天線插座	-	-	-	-	2	-	-	-	-	-	-
	Telephone Outlet 電話天線插座	-	-	-	-	2	-	-	-	-	-	-
	Fused Connection Unit for Lighting 燈熔斷器接線電掣	-	-	-	-	1	-	-	-	-	-	-
	Closet Lighting Fused Connection Unit 衣櫃燈熔斷器接線電掣	-	-	-	-	1	-	-	-	-	-	-

Remarks:

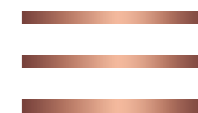
- The numbers as shown in the above table denote the numbers provided.
- The symbol "-" as shown in the above table denotes "Not Provided".

備註:

- 上表顯示的數目代表提供的數量。
- 上表 "-" 代表「不提供」。

23 FITTINGS, FINISHES AND APPLIANCES

裝置、裝修物料及設備



Schedule of mechanical and electrical provisions of residential units

住宅單位機電裝置數量說明表

Location 位置	Description 描述	G/F 地下	1/F-3/F & 6/F 1樓至3樓及6樓		3/F 3樓	5/F 5樓		7/F 7樓		8/F 8樓	9/F 9樓	10/F 10樓	
		A	A	B	B	A	B	A	B	A	A	A	
Bedroom 1 睡房 1	13A Single Socket Outlet 13A單位電插座	4	2	2	3	1	4	2	4	1	1	1	
	13A Twin Socket Outlet 13A雙位電插座	1	5	6	6	4	3	5	6	3	3	-	
	13A Twin Socket Outlet with USB 13A雙位電插座連USB插座	2	1	1	1	1	1	1	2	2	2	4	
	Air Conditioner Indoor Unit Fused Connection Unit 室內空調機熔斷器接線電掣	1	2	2	2	1	2	2	2	2	2	2	
	AV Outlet 影音系統插座	3	-	-	-	-	-	-	3	-	-	-	
	Closet Lighting Fused Connection Unit 衣櫃燈熔斷器接線電掣	2	2	2	2	1	2	2	2	-	-	2	
	Data Socket Outlet 數據插座	2	-	-	-	-	-	-	2	1	1	3	
	Electrical Curtain Fused Connection Unit 電動窗簾掣熔斷器接線電掣	-	-	-	-	-	-	-	-	-	-	-	1
	Electrical Curtain Control Adaptable Box 電動窗簾掣接線掣	4	4	4	4	4	4	4	2	2	2	1	
	Lighting Switch 燈掣	4	2	2	2	2	2	2	5	3	2	3	
	Lighting Point 燈位	13	10	8	8	9	10	10	9	9	9	18	
	NOW TV Socket Outlet NOW電視天線插座	1	-	-	-	-	-	-	1	-	-	-	
	Switch for Electric Curtain 電動窗簾掣	4	2	2	2	1	1	2	4	2	2	2	
	Switch for Exhaust Fan 抽氣扇開關掣	-	1	1	1	1	1	1	-	-	-	-	
	Telephone Outlet 電話天線插座	1	2	2	2	2	2	2	1	1	1	2	
	TV Aerial Outlet 電視天線插座	1	2	2	2	2	2	2	2	1	1	1	
Fused Connection Unit for Lighting 燈熔斷器接線電掣	-	1	1	1	1	1	1	-	-	-	-		
Switch for Dehumidifying Tube 防潮管開關掣	1	-	-	-	-	-	-	-	-	-	-		
Enclosed Area next to Bedroom 1 睡房 1旁封閉區域	Fused Connection Unit for Home Automation System 智能家居系統熔斷器接線電掣	-	-	9	9	-	-	-	-	-	-	-	
	13A Single Socket Outlet 13A單位電插座	-	-	1	1	-	-	-	-	-	-	-	
	Lighting Point 燈位	-	-	1	1	-	-	-	-	-	-	-	
Closet next to Powder Room 化妝間旁衣帽間	Lighting Switch 燈掣	-	-	-	-	-	-	-	-	-	-	1	
	Lighting Point 燈位	-	-	-	-	-	-	-	-	-	-	4	
	13A Single Socket Outlet 13A單位電插座	-	-	-	-	-	-	-	-	-	-	1	

Remarks:

- The numbers as shown in the above table denote the numbers provided.
- The symbol "-" as shown in the above table denotes "Not Provided".

備註:

- 上表顯示的數目代表提供的數量。
- 上表 "-" 代表「不提供」。

23 FITTINGS, FINISHES AND APPLIANCES

裝置、裝修物料及設備



Schedule of mechanical and electrical provisions of residential units

住宅單位機電裝置數量說明表

Location 位置	Description 描述	G/F 地下	1/F-3/F & 6/F 1樓至3樓及6樓		3/F 3樓	5/F 5樓		7/F 7樓		8/F 8樓	9/F 9樓	10/F 10樓
		A	A	B	B	A	B	A	B	A	A	A
Bedroom 3 & Closet 睡房3及衣帽間	13A Single Socket Outlet 13A單位電插座	-	-	-	-	-	-	-	-	-	-	1
	13A Twin Socket Outlet 13A雙位電插座	-	-	-	-	-	-	-	-	3	3	1
	Air Conditioner Indoor Unit Fused Connection Unit 室內空調機熔斷器接線電掣	-	-	-	-	-	-	-	-	2	2	-
	13A Twin Socket Outlet with USB 13A雙位電插座連USB插座	-	-	-	-	-	-	-	-	2	2	3
	Closet Lighting Connection Unit 衣櫃燈接線電掣	-	-	-	-	-	-	-	-	1	1	-
	Fused Connection Unit for Lighting 燈熔斷器接線電掣	-	-	-	-	-	-	-	-	-	-	2
	Data Socket Outlet 數據插座	-	-	-	-	-	-	-	-	1	1	3
	Electrical Curtain Control Adaptable Box 電動窗簾掣接線掣	-	-	-	-	-	-	-	-	4	4	-
	Lighting Switch 燈掣	-	-	-	-	-	-	-	-	3	3	3
	Lighting Point 燈位	-	-	-	-	-	-	-	-	5	5	13
	Switch for Electric Curtain 電動窗簾掣	-	-	-	-	-	-	-	-	2	2	3
	Telephone Outlet 電話天線插座	-	-	-	-	-	-	-	-	1	1	2
TV Aerial Outlet 電視天線插座	-	-	-	-	-	-	-	-	1	1	1	
Bedroom 3 睡房 3	13A Single Socket Outlet 13A單位電插座	-	-	1	1	-	1	1	-	-	-	-
	13A Twin Socket Outlet 13A雙位電插座	-	-	6	8	-	4	5	-	-	-	-
	13A Twin Socket Outlet with USB 13A雙位電插座連USB插座	-	-	1	1	-	1	1	-	-	-	-
	Air Conditioner Indoor Unit Fused Connection Unit 室內空調機熔斷器接線電掣	-	-	1	1	-	-	-	-	-	-	-
	Closet Lighting Fused Connection Unit 衣櫃燈熔斷器接線電掣	-	-	1	1	-	1	1	-	-	-	-
	Electrical Curtain Control Adaptable Box 電動窗簾掣接線掣	-	-	2	2	-	2	2	-	-	-	-
	Fused Connection Unit for Lighting 燈熔斷器接線電掣	-	-	1	1	-	1	1	-	-	-	-
	Lighting Switch 燈掣	-	-	2	3	-	1	-	-	-	-	-
	Lighting Point 燈位	-	-	8	8	-	7	8	-	-	-	-
	Switch for Electric Curtain 電動窗簾掣	-	-	1	1	-	1	-	-	-	-	-
	Switch for Exhaust Fan 抽氣扇開關掣	-	-	1	1	-	1	-	-	-	-	-
	Telephone Outlet 電話天線插座	-	-	2	2	-	2	2	-	-	-	-
TV Aerial Outlet 電視天線插座	-	-	2	2	-	2	2	-	-	-	-	

Remarks:

- The numbers as shown in the above table denote the numbers provided.
- The symbol "-" as shown in the above table denotes "Not Provided".

備註:

- 上表顯示的數目代表提供的數量。
- 上表 "-" 代表「不提供」。

23 FITTINGS, FINISHES AND APPLIANCES

裝置、裝修物料及設備



Schedule of mechanical and electrical provisions of residential units

住宅單位機電裝置數量說明表

Location 位置	Description 描述	G/F 地下	1/F-3/F & 6/F 1樓至3樓及6樓		3/F 3樓	5/F 5樓		7/F 7樓		8/F 8樓	9/F 9樓	10/F 10樓
		A	A	B	B	A	B	A	B	A	A	A
Shower Room 淋浴間	Lighting Point 燈位	-	-	-	-	-	-	-	-	-	-	2
Closet 衣帽間	13A Single Socket Outlet 13A單位電插座	5	-	1	1	4	-	-	1	-	-	-
	Air Conditioner Central Remote Controller 空調機集中控制機	-	-	-	-	-	-	-	1	-	-	-
	Lighting Point 燈位	12	-	2	2	4	-	-	4	-	-	-
	Lighting Switch 燈掣	4	-	2	2	1	-	-	1	-	-	-
	Miniature Circuit Breaker Board 微型斷路器配電箱	-	-	-	-	-	-	-	2	-	-	-
	13A Twin Socket Outlet 13A雙位電插座	1	-	1	1	-	-	-	-	-	-	-
	13A Twin Socket Outlet with USB 13A雙位電插座連USB插座	3	-	1	5	-	-	-	-	-	-	-
	Closet Lighting Fused Connection Unit 衣櫃燈熔斷器接線電掣	2	-	1	1	3	-	-	-	-	-	-
	Air Conditioner Indoor Unit Fused Connection Unit 室內空調機熔斷器接線電掣	1	-	2	2	1	-	-	-	-	-	-
	Switch for Dehumidifying Tube 防潮管開關掣	1	-	1	1	-	-	-	-	-	-	-
	Switch for Electrical Water Heater 電熱水爐開關掣	-	-	1	1	-	-	-	-	-	-	-
	Electrical Curtain Control Adaptable Box 電動窗簾掣接線掣	2	-	-	-	-	-	-	-	-	-	-
	AV Outlet 影音系統插座	3	-	-	-	-	-	-	-	-	-	-
	NOW TV Socket Outlet NOW電視天線插座	1	-	-	-	-	-	-	-	-	-	-
	TV Aerial Outlet 電視天線插座	1	-	-	-	-	-	-	-	-	-	-
	Telephone Outlet 電話天線插座	1	-	-	-	-	-	-	-	-	-	-
	Data Socket Outlet 數據插座	2	-	-	-	-	-	-	-	-	-	-
	Switch for Electrical Curtain 電動窗簾開關掣	3	-	-	-	-	-	-	-	-	-	-
	Fused Connection Unit for Lighting 燈熔斷器接線電掣	-	-	-	-	1	-	-	-	-	-	-
Closet next to Study Room 書房旁衣帽間	Lighting Point 燈位	-	-	-	-	-	-	-	-	6	6	-
	Lighting Switch 燈掣	-	-	-	-	-	-	-	-	1	1	-
	13A Twin Socket Outlet 13A雙位電插座	-	-	-	-	-	-	-	-	1	1	-
	Air Conditioner Indoor Unit Fused Connection Unit 室內空調機熔斷器接線電掣	-	-	-	-	-	-	-	-	1	1	-
	Telephone Outlet 電話天線插座	-	-	-	-	-	-	-	-	-	-	-
Data Socket Outlet 數據插座	-	-	-	-	-	-	-	-	-	1	1	-

Remarks:

- The numbers as shown in the above table denote the numbers provided.
- The symbol "-" as shown in the above table denotes "Not Provided".

備註:

- 上表顯示的數目代表提供的數量。
- 上表 "-" 代表「不提供」。

EXAMINATION RECORD

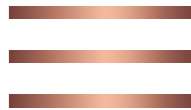
檢視紀錄



Examination/Revision Date 驗視/修改日期	Revision Made 所作修改	
	Page Number 頁次	Revision Made 所作修改
30 November 2023 2023年11月30日	10	Information on vendor and others involved in the Development is updated 賣方及有參與發展項目的其他人的資料
	14	Location plan of the Development is updated 更新發展項目的所在位置圖
	15, 16	Aerial photograph of the Development are updated 更新發展項目的鳥瞰照片
	16A (additional page) (加頁)	Aerial photograph of the Development is added 增添發展項目的鳥瞰照片
	55, 56, 57, 58	Summary of deed of mutual covenant are updated 更新公契的摘要
	111A (additional page) (加頁)	Fittings, Finishes and Appliances is added 增添裝置、裝修物料及設備
	120, 121	Maintenance of slopes are updated 更新斜坡維修
22 February 2024 2024年2月22日	9	Information on the Development is updated 更新發展項目的資料
	14	Location plan of the Development is updated 更新發展項目的所在位置圖
	22, 23, 24, 25, 26, 29, 30, 31, 32, 33, 34, 35, 36, 37, 38, 39, 40, 41, 42, 44, 46, 48	Floor plans of residential properties in the Development are updated 更新發展項目的住宅物業的樓面平面圖
	25A, 25B (additional page) (加頁)	Floor plans of residential properties in the Development are added 增添發展項目的住宅物業的樓面平面圖
	50, 51	Area of residential properties in the Development are updated 更新發展項目中的住宅物業的面積
	56, 58	Summary of deed of mutual covenant are updated 更新公契的摘要
	74, 75, 76, 77, 78, 78A, 79, 80, 82, 87, 88, 89, 90, 91, 92, 94, 95, 96, 97, 98, 99, 100, 101, 102, 103, 104, 105, 106, 107, 108, 109, 110, 111, 112, 113, 114, 115, 116	Fittings, Finishes and Appliances are updated 更新裝置、裝修物料及設備

EXAMINATION RECORD

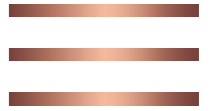
檢視紀錄



Examination/Revision Date 驗視/修改日期	Revision Made 所作修改	
	Page Number 頁次	Revision Made 所作修改
21 May 2024 2024年5月21日	14	Location plan of the Development is updated 更新發展項目的所在位置圖
	15	Aerial photograph of the Development is updated 更新發展項目的鳥瞰照片
	16	1. Obsolete aerial photograph of the development is deleted 1. 刪除發展項日期數的過時鳥瞰照片 2. This page is left blank intentionally 2. 本頁故意留白
	16A (deleted page) (刪頁)	Obsolete aerial photograph of the Development is deleted 刪除發展項日期數的過時鳥瞰照片
	22, 47	Floor plans of residential properties in the Development are updated 更新發展項目的住宅物業的樓面平面圖
	47A, 47B (additional page) (加頁)	Floor plans of residential properties in the Development are added 增添發展項目的住宅物業的樓面平面圖
	56, 58	Summary of deed of mutual covenant are updated 更新公契的摘要
	89A, 89B (additional page) (加頁)	Fittings, Finishes and Appliances are added 增添裝置、裝修物料及設備
	74, 75, 76, 77, 78, 78A, 78B, 79, 80, 81, 82, 83, 87, 88, 89, 90, 91, 92, 93, 95, 96, 97, 98, 99, 100, 101, 102, 103, 104, 105, 106, 107, 108, 109, 110, 111, 111A, 112, 113, 114, 115, 116, 118	Fittings, Finishes and Appliances are updated 更新裝置、裝修物料及設備
6 August 2024 2024年8月6日	14	Location plan of the Development is updated 更新發展項目的所在位置圖
	22, 47B	Floor plans of residential properties in the Development are updated 更新發展項目的住宅物業的樓面平面圖
	80, 111	Fittings, Finishes and Appliances are updated 更新裝置、裝修物料及設備
20 August 2024 2024年8月20日	14	Location plan of the Development is updated 更新發展項目的所在位置圖
	75, 79, 88	Fittings, Finishes and Appliances are updated 更新裝置、裝修物料及設備

EXAMINATION RECORD

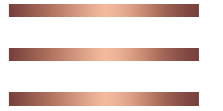
檢視紀錄



Examination/Revision Date 驗視/修改日期	Revision Made 所作修改	
	Page Number 頁次	Revision Made 所作修改
19 November 2024 2024年11月19日	14	Location plan of the Development is updated 更新發展項目的所在位置圖
	15	Aerial photograph of the Development is updated 更新發展項目的鳥瞰照片
13 February 2025 2025年2月13日	14	Location plan of the Development is updated 更新發展項目的所在位置圖
	16	Aerial photograph of the Development is updated 更新發展項目的鳥瞰照片
	16A, 16B (additional page) (加頁)	Aerial photograph of the Development are added 增添發展項目的鳥瞰照片
	22, 23, 28, 32, 36, 40, 47B	Floor plans of residential properties in the Development are updated 更新發展項目的住宅物業的樓面平面圖
	43A, 43B, 45A, 45B (additional page) (加頁)	Floor plans of residential properties in the Development are added 增添發展項目的住宅物業的樓面平面圖
	72, 73, 74, 75, 76, 77, 78, 78A, 79, 80, 81, 82, 83, 84, 87, 88, 89, 89A, 89B, 90, 91, 92, 93, 94, 95, 96, 97, 98, 99, 100, 101, 102, 103, 104, 105, 106, 107, 108, 109, 110, 111, 111A, 112, 113, 114, 115, 116, 118	Fittings, Finishes and Appliances are updated 更新裝置、裝修物料及設備
	78B, 78C, 78D, 89C, 111B (additional page) (加頁)	Fittings, Finishes and Appliances are added 增添裝置、裝修物料及設備
	123, 124	Information in application for concession on gross floor area of building are updated 更新申請建築物總樓面面積寬免的資料
18 February 2025 2025年2月18日	16	Aerial photograph of the Development is updated 更新發展項目的鳥瞰照片

EXAMINATION RECORD

檢視紀錄



Examination/Revision Date 驗視/修改日期	Revision Made 所作修改	
	Page Number 頁次	Revision Made 所作修改
8 May 2025 2025年5月8日	14	Location plan of the Development is updated 更新發展項目的所在位置圖
	15, 16	Aerial photograph of the Development are updated 更新發展項目的鳥瞰照片
	16A, 16B (deleted page) (刪頁)	Obsolete aerial photograph of the Development are deleted 刪除發展項目期數的過時鳥瞰照片
	73, 75, 76, 77, 78A, 78B, 78C, 78D, 79, 80, 81	Fittings, Finishes and Appliances are updated 更新裝置、裝修物料及設備
7 August 2025 2025年8月7日	14	Location plan of the Development is updated 更新發展項目的所在位置圖
7 November 2025 2025年11月7日	14	Location plan of the Development is updated 更新發展項目的所在位置圖
	15, 16	Aerial photograph of the Development are updated 更新發展項目的鳥瞰照片
5 February 2026 2026年2月5日	14	Location plan of the Development is updated 更新發展項目的所在位置圖
30 April 2026 2026年4月30日	14	Location plan of the Development is updated 更新發展項目的所在位置圖
	43A, 45A	Floor plans of residential properties in the Development are updated 更新發展項目的住宅物業的樓面平面圖
	95, 98, 100, 105, 110	Fittings, Finishes and Appliances are updated 更新裝置、裝修物料及設備